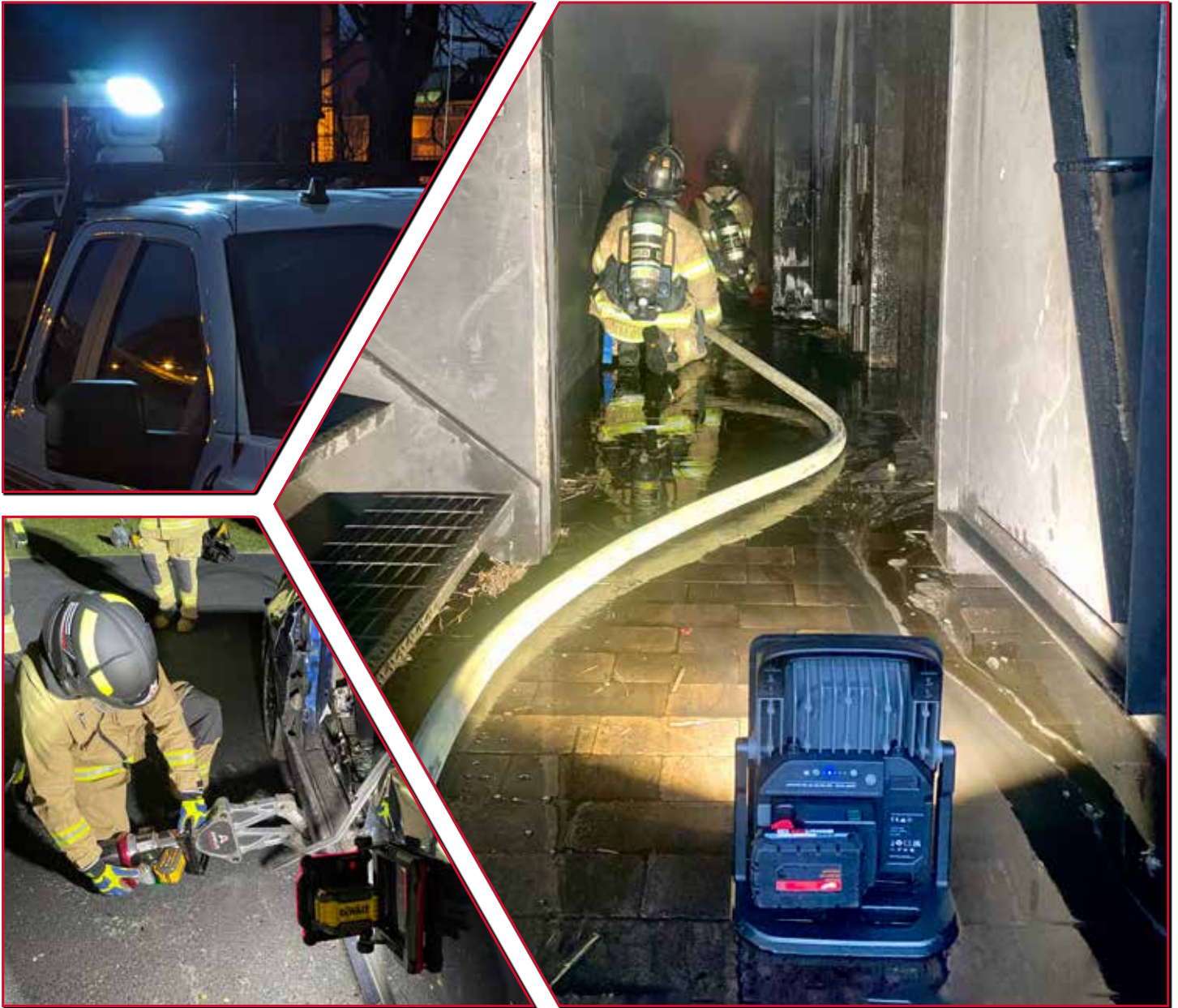


RECHARGEABLE AND PORTABLE LIGHTING SOLUTIONS



Watch
Product Video



Visit
Corporate Website

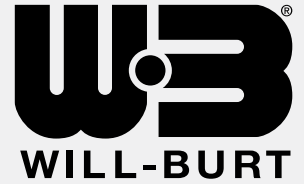


Download
Product Brochure



Watch
Corporate Video

The Will-Burt Company is the proud exclusive distributor of NightSearcher rechargeable lighting products. NightSearcher was established in 1989 and has provided the world with portable rechargeable lighting solutions that are reliable, durable, and easy to use. Applications of NightSearcher products range through multiple markets including fire, law enforcement, towing, security, construction, mining, and more. All products are powered by no maintenance lithium-ion batteries providing longevity and reliability in temperatures from -4° to 140°F, as well as containing a battery management system to protect against overcharging. While NightSearcher is located in the United Kingdom, Will-Burt will hold stock of core products within the United States.



NightSearcher professional products are carefully designed and manufactured to the highest standards to ensure the reliability and durability our customers need. This is why we offer a 3-year standard warranty on all manufacturing defects and 1-year warranty on all rechargeable batteries from the date of purchase.

Will-Burt will be adding additional rechargeable lighting products to our line. We have recently taken on Pi-Lit sequential warning lights – Smart Flares. Pi-Lit combines patented communications technology with brilliant LEDs and Li-Ion rechargeable batteries that provide a safe and reliable safety system for road side emergencies.

Additionally, Will-Burt’s line of portable lighting solutions provide LED scene lighting for emergency recovery operations, towing sites, and other job sites to improve the productivity and safety of nighttime operations. The powerful and efficient LED lights illuminate a wide area while being powered by the vehicle. As added flexibility, several mounting options are available either by truck or tripod, increasing portability from site to site.



CONTENTS



SOLARIS DUO 40K.....4-5



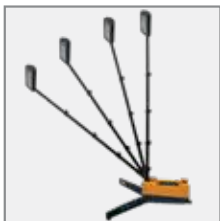
LIGHTWAVE 520.....16



MEGASTAR 20K 6-7



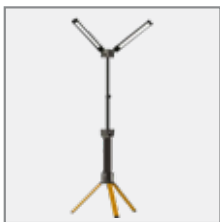
LIFEGUARD & SAFATEX RA 17-18



SOLARIS PRO 16K 8-9



EXPLORER XPL-C19



TOWER PRO 10K10



LED HAZARD WARNING LIGHTS 20-23



TWINSTAR CONNECT 12K.....11



NIGHT SCAN® SPOT24



WORKSTAR CONNECT 3K & GALAXY PRO 6K 12-13



NIGHT SCAN® PUMP-UP LIGHT MAST25



KANGASTAR 10K..... 14-15



PUSH UP POLES AND TRIPODS..... 26-27

SOLARIS DUO 40K

Most powerful portable area light in the world

ESSENTIAL FEATURES

- High powered LEDs
- Portable and fast deployment
- 2 telescopic masts reaching up to 6.2 ft / 1.9m
- Swivel and tilting heads
- Built in stability legs for use on uneven ground
- Sturdy moulded insert to store parts inside
- Housed in highly robust IP67 polycarbonate case
- Battery status indicator
- Sturdy and stackable

Supplied with:

AC charger

Optional Accessories:

Vehicle charger: 5837501



Battery Status Indicator

High: Green | Medium: Amber | Low: Red

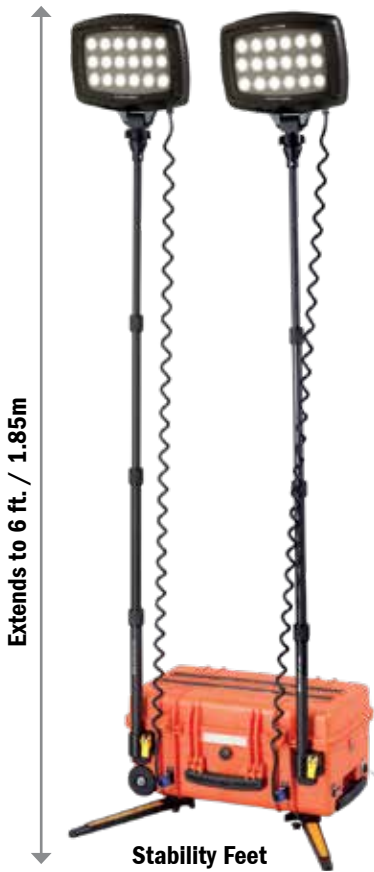
SPECIFICATIONS

Solaris Duo 40K	
Lumens	40,000 - 2 x 20,000 heads
Beam Distance	Up to 328 ft. / 100m
Run Time	3-24 hours
Mode	High / Medium / Low / Eco
Power Source	50Ah, 754.80Wh
Charging Time	7 hours 20 min
Dimensions	11 x 15 x 22.4 in. / 280 x 380 x 570mm
Weight	43.4 lb. / 19.7 kg
Code	5837701



Quick lock release

Best replacement for generator powered lights



Everything stores inside
IP67 Case

Extendable
handle and
wheels



MEGA STAR 20K

Rechargeable floodlight for remote locations

ESSENTIAL FEATURES

- IP65 waterproof polyethylene case
- 1 minute setup
- Full kits fits in waterproof bag
- Illuminating remote areas where lighting is crucial
- Durable all-weather construction
- Light and easy to carry with shoulder strap
- Additional power packs are available for longer runtimes
- Extends to 12 ft / 3.7 m

Supplied with:

Light Head | Tripod | Battery Pack | Shoulder Strap
Weatherproof Bag | AC Charger

Optional Accessories:

Additional power packs for longer run times: 5837401
Vehicle Charger: 5837501 | Ground pegs: 5837601

SPECIFICATIONS

MegaStar 20K	
Lumens	20,000
Beam Distance	Up to 164 ft. / 50m
Run Time	2-8 hours
Mode	High / Medium / Low / Eco
Power Source	14.8V 18Ah, 266.40Wh
Charging Time	7 hours 20 min
Ingress Protection	IP65
Dimensions	3 x 1.2 x 0.6 in. / 75 x 30 x 15mm
Weight	9.9 lb. / 9.5 kg
Code	5837301



Illuminates remote areas where lighting is not adequate



Entire kit is supplied in a weatherproof bag

Light Head | Tripod | Battery Pack
AC Charger Shoulder Strap
Weatherproof Bag



Red / Amber / Green



Light modes operated from battery pack



Stability Ground Pegs



Upgraded battery pack



Hook-on tripod bracket



Extends 12 ft / 3.7 m



4 light modes to choose from: high, medium, low, and eco

SOLARIS PRO 16K

The programmable LED floodlight with a 48 hours runtime!

ESSENTIAL FEATURES

- High powered LEDs
- Lightweight and portable
- Fast deployment
- Extends to 6 ft. / 1.85m with built in cable to avoid trip hazards
- Built in stability legs for use on uneven ground
- 180° Swivel and tilting light head
- Lightweight Lithium-Ion batteries
- Dual optics - Spot and wide beam
- Emergency light mode

Supplied with:

AC charger and shoulder strap

Optional Accessories:

Vehicle charger: 5837501

Ground pegs: 5837601

SPECIFICATIONS

Solaris Pro 16K	
Lumens	16,000
Beam Distance	Up to 1640 ft. / 500m
Run Time	2.25-48 hours
Mode	Boost (Search + Flood) / Search / Flood
Power Source	14.8V 18.2Ah, 269.36Wh
Charing Time	6 hours
Ingress Protection	IP65
Dimensions	20.4 x 6.1 x 8.7 in. 517 x 155 x 220mm
Weight	15.4 lb / 7 kg
Code	5837801



Lightweight for easy transportation



Compact size for storage



LCD programmable display

For selection of operation modes and programming a runtime of up to for 48 hours



Light mode & runtime digital selector



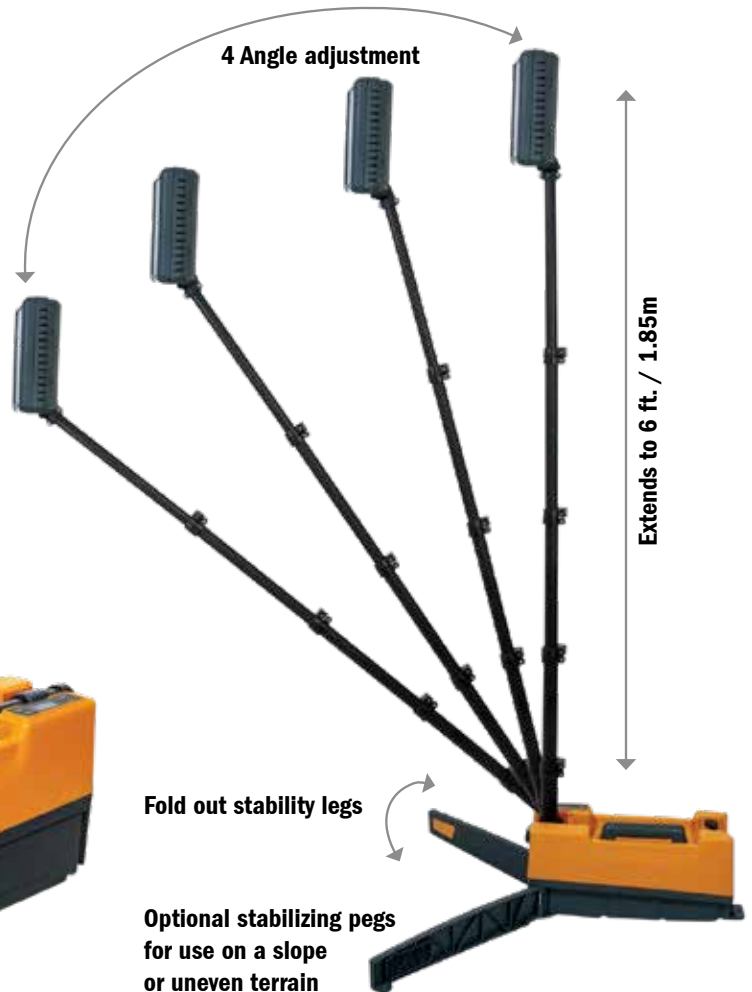
Battery status by color

2 Battery options available

Dual Optics
Spot and Wide Beam

Flood

Spot



TOWER PRO 10K

Collapsible and rechargeable hybrid-powered floodlight

ESSENTIAL FEATURES

- Extends to 7 ft. / 2.2m
- 360 ft. / 110m light beam with 10,000 lumens
- Portable, collapsible design, quick and easy to setup
- Multi-angle rotational lights
- Can be powered directly from AC charger (medium mode only)
- Floor light: Extendable feet and legs
- Reversible ground spikes
- Robust housing
- Switch & brightness control panel
- Warm white and cool white light modes
- Battery charging indicator

Supplied with:

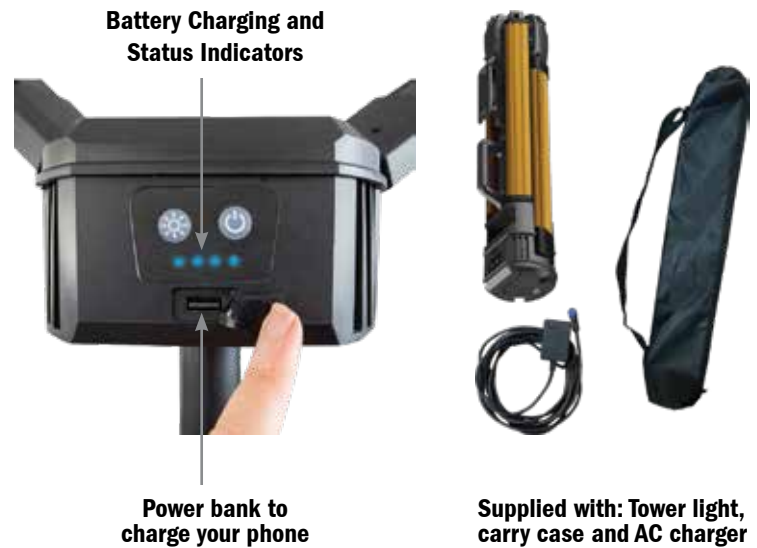
AC charger | Carry Bag

SPECIFICATIONS

Tower Pro 10K	
Lumens	10,000
Beam Distance (ft. / m)	Up to 360 / 110
Run Time	1.5-5 hours
Mode	High / Medium / Low
Power Source	14.4V 4000mAh 58Wh, Li-ion
Charging Time	4.5 hours
Ingress Protection	IP54 / IK07
Dimensions (in. / mm)	5.9 x 5.9 x 86.6 / 150 x 150 x 2200 Folded: 25.5 x 5.9 / 150 x 647
Weight (lb / kg)	13 / 5.9
Code	5993801



Floor light with retractable feet and legs



Battery Charging and Status Indicators

Power bank to charge your phone

Supplied with: Tower light, carry case and AC charger

TWINSTAR CONNECT 12K

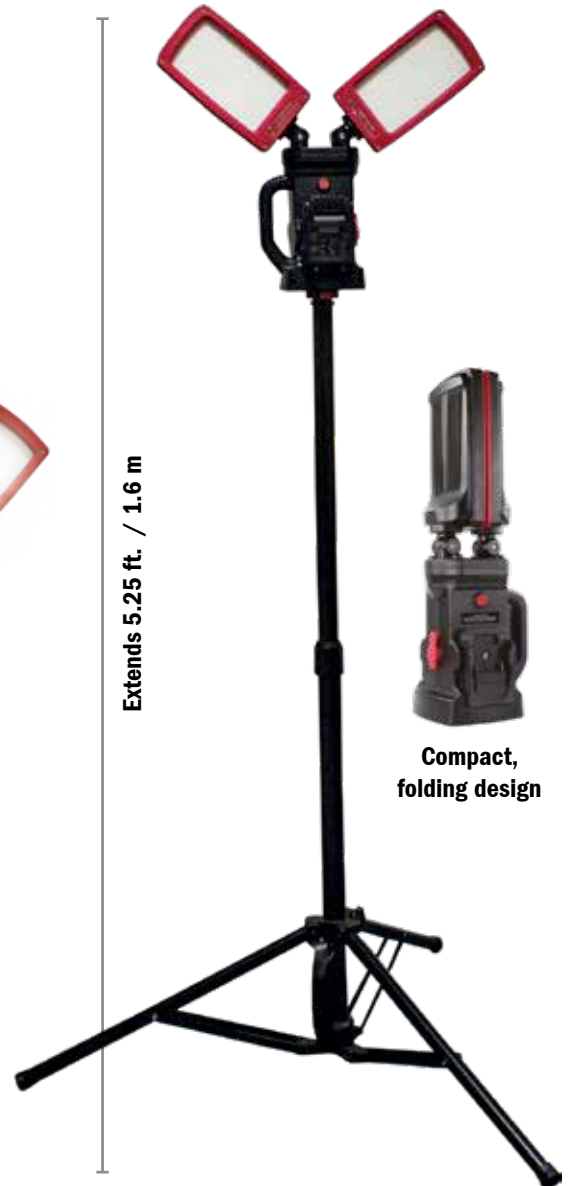
Multi-Angled twin head light with power tool battery adapters

ESSENTIAL FEATURES

- Accepts batteries from 11 leading power tool brands
- Quick and easy to setup
- 2 x Power / Light mode switch, to turn on 1 or both light heads
- Multi-angled light heads
- 5000K Daylight illumination
- Carry handle
- Removable light head, with supplied quick release tripod



Removable light head



Extends 5.25 ft. / 1.6 m

Compact, folding design

Supplied with:

4x Power tool adapters | 5.25 ft. / 1.6m Tripod

Optional Accessories:

Battery Adapter (DeWalt, Milwaukee): 5994101

SPECIFICATIONS

TwinStar Connect 12K	
Lumens	12,000 - 2 x 6,000 heads
Beam Distance (ft. / m)	Up to 164 / 50
Run Time	1-8 hours
Mode	High / Medium / Low
Ingress Protection	IP54 (without battery)
Dimensions (in. / mm)	Light head: 18.7 / 6.7 x 5.5 / 475 x 170 x 140
Weight (lb / kg)	Light: 4 / 1.8 Tripod: 4.6 / 2.1
Code	5994201



WORKSTAR CONNECT 3K

Work light designed to operate from rechargeable power tool batteries

ESSENTIAL FEATURES

- 3 light modes - high, medium, low
- Beam Distance up to 82 ft / 25m
- Run Time - up to 16 hours
- Powerful 3,000 lumens
- Tripod mountable
- Toughened glass lens
- IP54 and IK07 shock proof Rating
- 4 X Powerful magnetic feet
- Adjustable stand with hanging hook
- Operates from power tool batteries
- Compact, fold flat design
- USB power bank

Supplied with:

4 x Power Tool Adapters accepting the following battery brands: Black & Decker | Bosch | Makaita | Stanley | Dewalt | Porter | Milwaukee (14-21V batteries not included)

Optional Accessories:

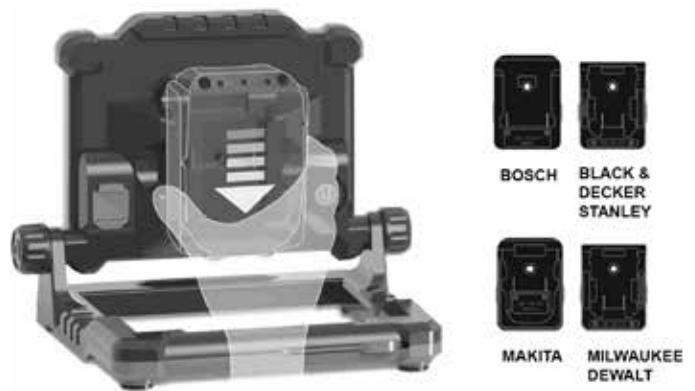
2m Tripod: 5837101

SPECIFICATIONS

WorkStar Connect 3K	
Lumens	3,000
Beam Distance (ft. / m)	Up to 82 / 25
Run Time	2-16 hours (18-21V) battery
Mode	High / Medium / Low
Ingress Protection	IP54
Dimensions (in. / mm)	8.9 x 3.5 x 13.4 / 225 x 90 x 340
Weight (lb / kg)	2.2 / 1
Code	5847301



Ultra powerful magnetic base



GALAXY PRO 6K

6000 Lumens rechargeable floodlight, ideal for all environments

ESSENTIAL FEATURES

- Improved electronics for enhanced performance
- Rechargeable or powered directly from AC charger
- Drop tested from 8 ft. / 2.5m
- Designed for use in harsh, industrial locations
- Robust housing made from the toughest composite materials
- Charger storage compartment
- Lightweight - only 3.3 lb / 1.5kg
- IK07 Impact Protection

Supplied with:

AC charger

Optional Accessories:

2m Tripod: 5837101 | 3.5m Tripod: 5837001

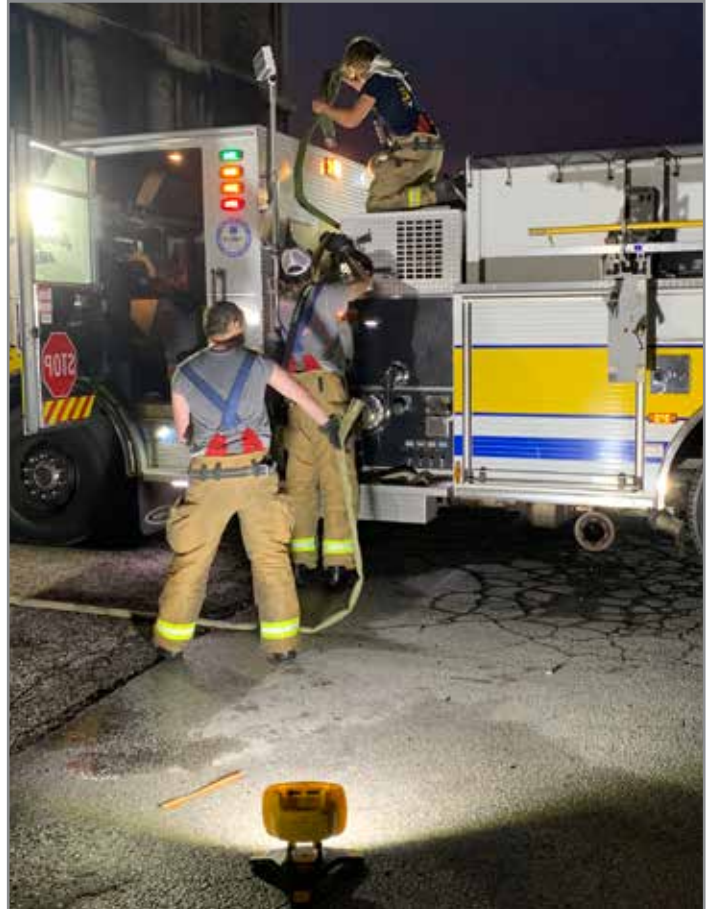
T-Bar Bracket: 5836801 | Vehicle Charger: 5836901

Set of 3 Magnetic Mounts: 5836601

Single Magnet Mount: 5836701

SPECIFICATIONS

Galaxy Pro 6K	
Lumens	6,000
Beam Distance	Up to 196 ft. / 60m
Run Time	2.5-60 hours
Mode	High / Medium / Low / Dimmable
Power Source	7.4V 13.2Ah, 97.68Wh
Charging Time	8 hours
Ingress Protection	IP54
Dimensions	12.2 x 13.8 x 11.2 in. / 310 x 350 x 285mm
Weight	3.3 lb. / 1.5 kg
Code	5836501



Improved electronics for enhanced performance

KANGASTAR 10K

Professional, Rechargeable LED Work Light

ESSENTIAL FEATURES

- 10,000 lumen Anti-Glare Scene Light
- Powered by AC, tool battery or rechargeable battery
- Optional lithium iron rechargeable battery
- Integrated stand, handle, and hanging hooks
- Brightness Control
- USB Output
- Designed for Harsh Environments
- IP 65 rated
- Rugged / Tough Aluminum Housing
- Ultra-Wide 330 ft / 100m Beam

Supplied with:

3 in 1 Battery Adapter (DeWalt, Milwaukee, Metabo)

Optional Accessories:

AC Adapter / Battery Charger: 5838801
 Rechargeable 19.2 6Ah 115.2Wh LiFe PO₄
 Battery: 5838701 | 4 in 1 Battery Adapter
 (Panasonic, Makita, Bosch, Hikoki): 5838601
 3.5m Tripod: 5837001

SPECIFICATIONS

Kangastar 10K	
Lumens	10,000
Beam Distance (ft. / m)	Up to 328 / 100
Run Time	1.5 - 7.5 hours (6Ah battery)
Mode	20% / 40% / 60% / 80% / 100%
Material	Aluminum, PC, POM, Silicon Rubber
Charging Time	2 hours
Ingress Protection	IP65
Dimensions (in. / mm)	10.4 x 5.7 x 14.2 / 265 x 145 x 360
Weight (lb / kg)	6.6 / 3
Code	5838501



Designed for harsh environments with rugged and tough IP65 rated enclosure



Supplied
3 in 1 Battery Adapter
(DeWalt, Milwaukee, Metabo)



Optional
4 in 1 Battery Adapter (Bosch, Panasonic, Makita, Hikoki)
Product #: 5838601



Optional
Rechargeable Battery
Product #: 5838701



Optional
AC Adapter / Battery Charger
Product #: 5838801



Powered by 7 of the most popular power tool batteries



Brighter and higher quality ultra-wide beam of light up to 330 ft / 100m with COB LED



Optional 11.5 ft. / 3.5m Tripod
Product #: 5837001



Hanging hooks for convenient operation



Portable and cable free providing flexibility and continuous light



Convex lens for improved light beam



Brightness Control

USB power bank charges your device

On/Off Button
Battery



LIGHT WAVE 520

Rechargeable, Spot & Flood beam with ON/OFF wave sensor

ESSENTIAL FEATURES

- 520 lumen with 460 ft / 140m beam
- Dimmable on all light modes
- Spot to flood beam
- Battery status indicator
- Lightweight - only 96g
- Helmet mountable with clips
- Adjustable non-slip head straps

Supplied with:

USB-C charging cable

Optional Accessories:

Vehicle Charger: 5837901

AC USB Charging Adapter: 5872801

SPECIFICATIONS

Light Wave 520	
Lumens	520
Beam Distance	Up to 460 ft. / 140m
Run Time	2.5-5 hours
Mode	Spot + Flood / Flood / Spot
Power Source	3.7V 1800Ah, 6.66Wh
Charging Time	3 hours
Ingress Protection	IP44
Dimensions	2.6 x 1.6 x 1.9 in. / 65 x 40 x 47mm
Weight	0.2 lb. / 96 g
Code	5838901



2 Ways to turn ON+OFF: Manual switch or Wave

Ideal when hands are dirty, wearing gloves, fishing or climbing



Spot Beam



Flood Beam

SAFATEX RA

Hazardous Area Right Angled Hand Torch

ESSENTIAL FEATURES

- 325 Lumens with 951 ft / 290m beam
- Runs up to 13 hours
- High powered LED - CREE XP-G2
- Lockable battery compartment
- Robust polycarbonate housing
- Rubber grip and head for durability
- Pocket/Belt stainless steel clip
- Drop proof up to 3.2 ft / 1m
- Easy to use, maintenance free
- Gas pressure release valve
- Powered by 4 x AA batteries (not included)

Certifications:

- Class I DIV 1&2 GRP ABCD
Class II DIV 1&2 GRP EFG
CLASS III
Temp Code: T4 IP54
File Number: 261379
- ATEX: Ex I M1 Ex ia I Ma
Ex II 1G Ex ia IIC T4 Ga
Sira 15ATEX2166X
- IECEx: GAS:Ex ia IIC T4 Ga
Mining: Ex ia Ma
IECEx SIR 15.0062X

SPECIFICATIONS

Safatex RA	
Lumens	High: 325 lumens Low: 140 lumens
Beam Distance	High: 951 ft. / 290m Low: 604 ft. / 184m
Run Time	High: 6.5 hours Low: 13 hours
Ingress Protection	IP54
Dimensions	7.2 x 2.7 x 2.5 in. / 183 x 69 x 63 mm
Weight	.55 lbs. / 250 g
Code	5873201



Robust polycarbonate housing for external durability



Handy pocket clip provides hands-free operation

LIFEGUARD

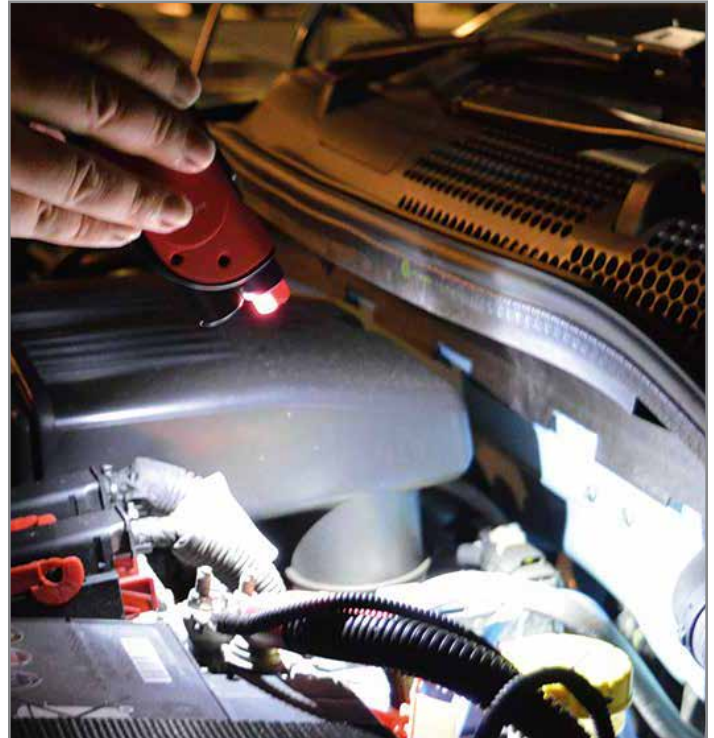
Multifunctional Safety Light

ESSENTIAL FEATURES

- 5 In 1 Emergency Kit: Wide Floodlight | Narrow Torch | Red Flashing Emergency Light | Window Breaker | Belt Cutter
- 200 Lumens with 16.4 ft / 5m beam
- Runs up to 5 hours
- LED flood beam and inspection torch
- Ultra bright 2W COB LED strip
- Strong magnetic side
- Resilient polycarbonate and ABS construction

Supplied with:

3 x AAA batteries



Wide Floodlight



Narrow Torch



Red Flashing Emergency Light



Window Breaker

SPECIFICATIONS

Lifeguard	
Lumens	Floodlight: 200 lumens Torch: 70 lumens Flashing: 200 lumens
Beam Distance	16.4 ft / 5 m
Run Time	Floodlight: 2.5 hours Torch: 3 hours Flashing: 5 hours
Dimensions	6.2 x 1.9 in. / 158 x 47.3 mm
Weight	.28 lbs. / 127 g
Code	5875101



Belt Cutter



Strong magnetic side

EXPLORER XPL-C

Wall or vehicle mounted rechargeable flashlight designed for professionals

ESSENTIAL FEATURES

- 1,100 Lumens with 1968 ft / 600m beam
- Rechargeable lithium battery
- Type III hard anodised aluminum housing
- Powerful long spot beam
- Tail end button - designed for tactical use
- Battery charging indicator
- Textured body for secure grip
- IK07 shock proof
- Aircraft grade aluminium
- Ideal for domestic, security, and emergency use

Supplied with:

Li-ion Battery | Charging Station | Red Cone
USB-C Charging Cable

Optional Accessories:

Vehicle Charger: 5873901

AC USB Charging Adapter: 5872801



Supplied with Red Cone for signalling

SPECIFICATIONS

Explorer XPL-C	
Lumens	1,100
Beam Distance	Up to 1968 ft. / 600m
Run Time	1-12 hours
Mode	High / Low / Flashing / SOS
Power Source	3.7V 2200Ah, 8.14Wh
Charging Time	6 hours
Ingress Protection	IP65
Dimensions	4.7 x 7.5 x 2.75 in. / 120 x 190 x 70mm
Weight	0.62 lb. / 280 g
Code	5872701



PI-LIT SMART FLARES



Sequential LED Hazard Warning Lights

ESSENTIAL FEATURES

- Automatic synchronization of lights with no programming
- Rapid Deployment System automatically turns on lights when removed from carrying case
- Tilt sensor directs light output optimizing driver awareness
- Mode Memory saves light pattern, deployment order and activation settings for next operation
- Pair Mode syncs single or multiple lights
- Battery status check with push of a button
- 20+ hour runtime and 6 hour charge time with Lithium-ion rechargeable battery
- IP66 water and dust rating
- Withstands weights up to 30,000 lbs.
- Available in 6 and 10 packs with orange, blue, or red flares
- 2-Year warranty

Supplied with:

Carrying case | DC 12/24V Vehicle Charger | AC 110/240V Wall Charger

Optional Accessories:

Cone mount (6 Pack): 5873801 | Cone mount (10 Pack): 5873701

SPECIFICATIONS

Pi-Lit Smart Flares		
Run Time	20+ hour runtime (flash pattern dependent)	
Mode	4 flash patterns: 2 sequential, 1 simultaneous, 1 steady-burn	
Charging Time	6 hours from a completely depleted battery	
Ingress Protection	IP66	
Dimensions	Flare: 4.25 x 3.5 x 1 in. / 108 x 89 x 25.4mm	
Weight	Flare: .5 lbs. / .02 kg	
Code	Blue 6 Pack	5873601
	Blue 10 Pack	5873501
	Orange 6 Pack	5873401
	Orange 10 Pack	5873301
	Red 6 Pack	5891001
	Red 10 Pack	5890901



Orange



Blue



Red



Magnetic Cone Adapter securely mounts single or multiple flares on top or both sides of the cone.



Smart Sequential Road Flares safely alert traffic around the scene with highly visible LEDs from up to 3,281 ft. / 1,000m



Orange



Blue



Red



PULSAR PRO

LED Hazard Warning Lights

ESSENTIAL FEATURES

- Shock resistant plastic housing with magnetic back
- Waterproof up to 3.28 ft / 1 m
- Visible from over 3,280 ft / 1 km
- Crushproof up to 6,000 lbs. / 1361 kg
- Floats in water
- 10 light modes, including white torch setting
- Runtime of up to 60 hours
- Working Temperature: -40° to 60°C

Supplied with:

AC Adapter | Car Charger | Carrying Case

Optional Accessories:

Cone Mount: 5838401



Optional cone mount
Product #: 5838401

SPECIFICATIONS

Pulsar Pro		
Ingress Protection	IP67	
Dimensions	Case: 380 x 70 x 370 mm / 15 x 2.76 x 14.6 in.	
	Car Charger: 24 x 110 mm ø / .9 x 4.3 in.	
Weight	6.4 lb. / 2.9 Kg	
Charging Time	10 Hours	
Power Source	700mAh 3.7V 2.59Wh	
Code	Red 5 Pack	5875201
	Blue 5 Pack	5875301



Virtually indestructible with shock resistant plastic housing

Run times for light modes:

Rotate	9 Hours	Quad Flash	9 Hours
Single Blink	60 Hours	Alternating Blinks	9 Hours
SOS Rescue	14 Hours	Steady on High	5 Hours
Steady on Low	35 Hours	2 LED Lights	28 Hours
4 LED Lights	18 Hours	White Torch Mode	8 Hours

Millicandela (MCD)

Red	7,000
Blue	6,000



Central white work light ideal for emergencies

SINGLE PULSAR-AAA

LED Hazard Warning Lights

ESSENTIAL FEATURES

- Shockproof and magnetic housing
- Extremely robust and compact
- IP67 weatherproof rating
- Withstands weights up to 2,000 lbs.
- Fold away hanging hook

Supplied with:

3 x AAA batteries

Optional Accessories:

Cone Mount: 5837101



**Optional cone mount:
Product #: 5838401**

Fold away hanging hook

SPECIFICATIONS

Pulsar-AAA		
Run Time	Up to 240 hours depending on mode	
Ingress Protection	IP67	
Dimensions	1.3 x 4.3 in. / 34 x 110mm	
Weight	.38 lb. / 170 g	
Code	Red	5847401
	Blue	5847501
	Green	5847601
	Yellow	5847701

Run times for light modes:			
Rotate	52 Hours	Quad Flash	120 Hours
Single Blink	240 Hours	Alternating Blinks	18 Hours
SOS Rescue	22 Hours	Steady on High	10 Hours
Steady on Low	25 Hours	2 LED Lights	52 Hours
4 LED Lights	25 Hours	White Torch Mode	60 Hours

Millicandela (MCD)	
Red	6,000
Blue	11,000
Green	7,000
Yellow	7,500



360° Illumination - visible from over 3,280 ft / 1 km.



Crushproof up to 2,000 lbs / 907 kg.

NIGHT SCAN® SPOT

nightscan spot®

The Night Scan Spot is a rotatable, remote-controlled LED light. The wireless remote allows the light to be remotely adjusted by the operator.

With a vertical tilt up of 70° and 45° tilt down and an infinite horizontal rotational range (clockwise and counterclockwise), The Night Scan Spot from Will-Burt allows for pan-tilt motion. Also equipped with a flashing alert feature, the remote-controlled LED light can be used to warn approaching motorists or pedestrians of potential hazards or help is needed. It can also be used with service vehicles to alert the on-coming vehicles there are people at work, and more.



Available in White / Black Colors

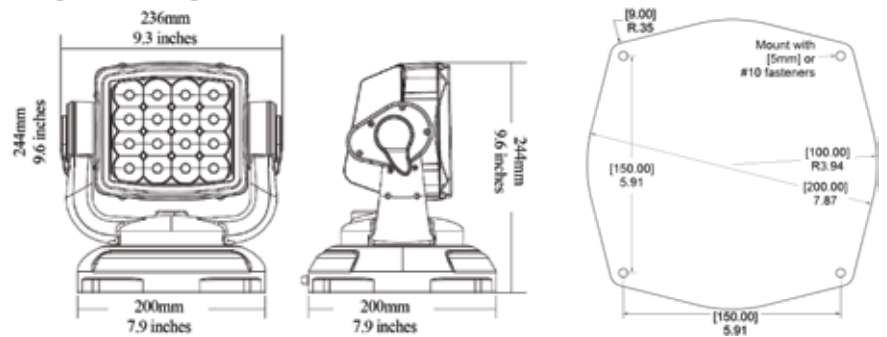


(2) Handheld Remote Controls Included

Specifications

Night Scan Spot	
Lumens	6,720
Operating Voltage	10 - 30VDC
Power Consumption	80W
Maximum Distance for Operating Remote Control	Up to 130 ft.
Weight	7 lbs. (3.2KG)
Remote Control Battery	(1) 23A battery
Available Colors	White / Black

Engineering Specifications



NIGHT SCAN® PUMP UP LIGHT MAST

The Night Scan Pump Up Light Mast provides a fast and affordable way to illuminate your work area. The lightweight pneumatic mast elevates quickly to full height by means of a built-in hand pump. The powerful and efficient LED lights illuminate a wide area while being powered by the vehicle. The tower quickly mounts into an optional 2" hitch receiver, tripod and/or drive-on stand.

Essential Features

- 40,000 lumens from two Night Scan X200 LED lights
- Available heights - 13 or 19 ft.
- 60 second extension time
- Mast transport bag included
- Powered from vehicle - 12 volts, 18.4 amps
- Total system weight - 80 pounds
- Tower system warranty - 2 years



OPTIONAL MOUNTING HARDWARE



Tripod with Bubble Level



2" Hitch Mount



Drive-On Stand

OPTIONAL ACCESSORIES



Cable Management

QUICK CONNECT MAST



Quick Connect Mast Unlocked



Quick Connect Mast Locked

SPECIFICATIONS

Model	5770801	5769501
Extended Height	13.1 ft. / 4 m	19.6 ft. / 6 m
Nested Height	4.2 ft. / 1.25 m	5.3 ft. / 1.60 m
Payload Capacity	55.1 lbs. / 25 kg	55.1 lbs. / 25 kg
Number of Sections	5	5
Tube Diameter	3.54 in. - 1.97 in. / 90 mm - 50 mm	3.54 in. - 1.97 in. / 90 mm - 50 mm
Collar Type	Friction Locking	Friction Locking
Finish	Black paint and Clear anodize	Black paint and Clear anodize

ADAPTABLE PUSH-UP LIGHT POLE

Will-Burt's Adaptable Push-Up Pole can be configured eight ways!

The name says it all, in order to deliver the most flexible light pole on the market, Will-Burt has designed a push-up pole that can be sized from a maximum of 65" to a minimum of 35" and configured one of eight ways in order to fit nearly any area of the truck. The pole comes with a safety sensor, when installed, can provide an alert that the pole is extended / deployed.

Order one pole and light, and simply assemble and configure as desired.



Adaptable Push-Up Light Pole Configurations

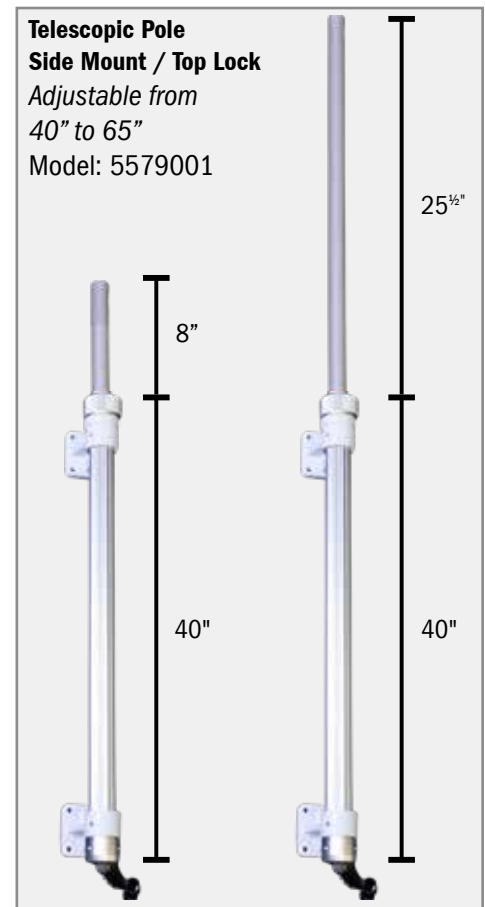
1. Side Mount Bottom Lock Push Pole with Sensor
2. Side Mount Bottom Lock Push Pole without Sensor
3. Through Mount Bottom Lock Pole with Sensor
4. Through Mount Bottom Lock Pole without Sensor
5. Top Lock Side Mount Pole with Sensor
6. Top Lock Side Mount Pole without Sensor
7. Top Lock Through Mount Pole with Sensor
8. Top Lock Through Mount Pole without Sensor

Adaptable Push-Up Light Pole Essential Features

- Deployment Safety Sensor
- Lock operates in either direction - easy for gloved hands.
- Rugged, anodized aluminum withstands harsh environments.
- Simple deployment
- Internal wire 14 AWG UL approved cable can carry both AC and DC current.
- Universal 3/4" NPT adapter
- Includes 2" offset brackets.
- Easy Assembly



Adaptable Push-Up Light Pole
 Side Mount / Bottom Mount /
 Top Mount / Through-Body Mount
 Model: 5579001



PUSH-UP POLES AND TRIPODS

Safe and reliable lighting is your number one priority during nighttime operations. Light poles and tripods by Will-Burt are designed to work when you need them. Constructed of corrosion resistant aluminum that is anodized, polished, and painted, they will safely elevate your lights for years.

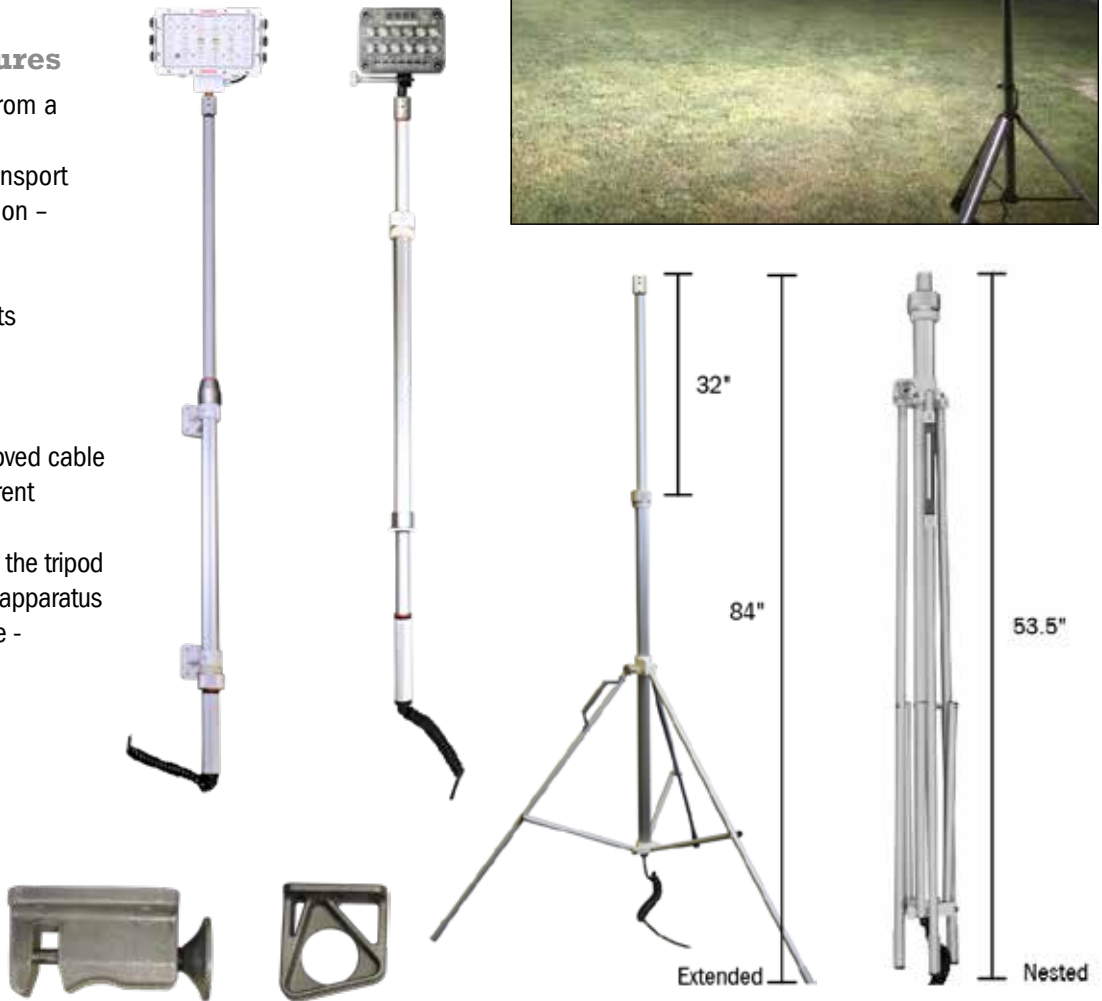
All Will-Burt poles and tripods use heavy-duty UL approved 14 AWG cables for reliability and safety. Insulated and tough, these cables are resistant to cracking and UV damage.

Poles and Tripods built to Will-Burt's demanding standards to meet your demanding standards.



Tripod Essential Features

- Extends up to 84" / 213cm from a compact 53.5" / 135cm
- Integrated handle for easy transport
- Lock operates in either direction - easy for gloved hands.
- Rugged, anodized aluminum withstands harsh environments
- Rubber feet for better grip on slick surfaces
- Simple deployment
- Internal wire 14 AWG UL approved cable can carry both AC and DC current
- Universal 3/4" NPT adapter
- Optional truck mount kit allows the tripod to be stored on the side of the apparatus and can be used as a light pole - Part Number: 5578801



Telescopic Tripod Mounting Bracket
Part Number: 5578801

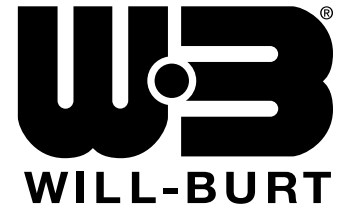
Telescopic Tripod with Handle
Part Number: 5578701

Purchase Options

Select a pole or tripod and add your own light designed for an internal cable. Combine a pole or tripod with a Firetech pole-mount light and we will assemble it for you.

Model	Guardian	Guardian Elite	FT-SL-15 / FT-SL-X-15	Patriot
Product Photo				
Lumens	10,000	20,500	20,000 / 'X' 28,000	DC 28,000 / AC 31,300
Voltage	DC or AC	DC or AC	DC or AC	DC or AC
Switch Option	Yes	Yes	Yes	Yes

CONTACT YOUR SALES REPRESENTATIVE TODAY



Contact Us
Complete a Contact Form

WILL-BURT NORTH AMERICA
WORLD HEADQUARTERS

401 Collins Boulevard, Orrville, OH USA 44667
Telephone: +1 330 682 7015
Mast Customer Service: +1 330 684 4000
Fax: +1 330 684 1190
Email: info@willburt.com

WILL-BURT ASIA
SINGAPORE SALES OFFICE

1 Fullerton Road, #02-01 One Fullerton,
Singapore 049213
Telephone: +65 6832 5689
Fax: +65 6722 0664 / Email: info@willburt.com

INTEGRATED TOWER SYSTEMS
A WILL-BURT COMPANY

2703 Dawson Road
Tulsa, OK 74110
Telephone: +1 800 850 8535
Fax: +1 918 749 8537
Email: programs@itstowers.com

WILL-BURT
GERMANY

Fischergasse 25
D-91344 Waischenfeld, Germany
Telephone: +49 9202 180
Fax: +49 9202 1811
Email: info@willburt.com

WILL-BURT
TÜRKİYE

Ahi Evran OSB Mahallesi,
Nahcivan Caddesi, No: 8/2, Sincan, Ankara 06935
Telephone: +90 535 662 9060 / Fax: +90 312 502 6970
Email: info@willburt.com

WILL-BURT
UNITED KINGDOM

Unit 5b, Station Approach
Four Marks, Alton Hampshire, GU34 5HN,
United Kingdom
Telephone: +44 (0) 1403 265532
Fax: +44 (0) 1403 259072 / Email: info@willburt.com

CLARK MASTS
A WILL-BURT COMPANY

18-20 Ringwood Road, Binstead, Isle of Wight, PO33 3PA, England
Telephone: +44 (0) 1983 563691/567090
Fax: +44 (0) 1983 566643/811157
E-mail: sales@clarkmasts.com

The Will-Burt Company, headquartered in Orrville, Ohio, USA, is the world's premier manufacturer of mobile telescoping masts, towers and pan and tilt positioners. We offer virtually every mobile payload elevation and integration solution for defense, government, first responders, cellular and mobile, broadcast, energy production and other markets. Will-Burt also offers contract manufacturing, metal fabrication, powder-coating, and rapid prototyping services. Will-Burt is an international company with offices and manufacturing in the USA, England, and Germany along with offices in Singapore and a joint venture in Turkey. All Will-Burt Company manufacturing locations are backed by a certified ISO 9001:2015 Quality Management System. Incorporated in 1918, Will-Burt is 100% employee-owned and is classified as a small business.